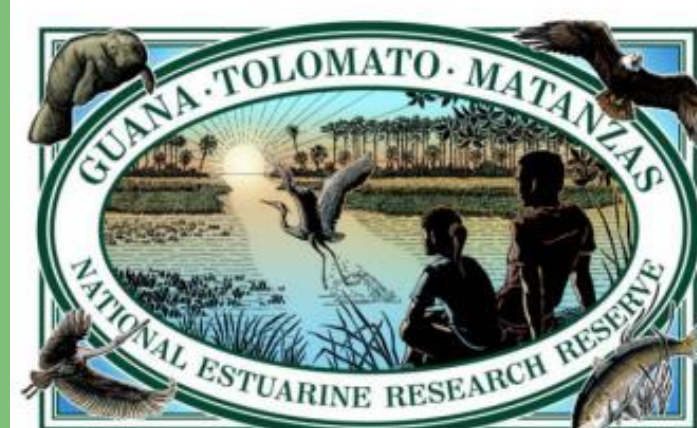




# Planning for Sea Level Rise in the Matanzas Basin

## Sea Level Rise Adaptation Options for the GTM Research Reserve



### research

- Federal, state, and local partnerships
- Science based and stakeholder inclusive
- Multi-scale



### collaboration

- Private partnerships
- Regional partnerships
- Agricultural lands managed for conservation and water resource protection



**GTM Research Reserve**

### Legend

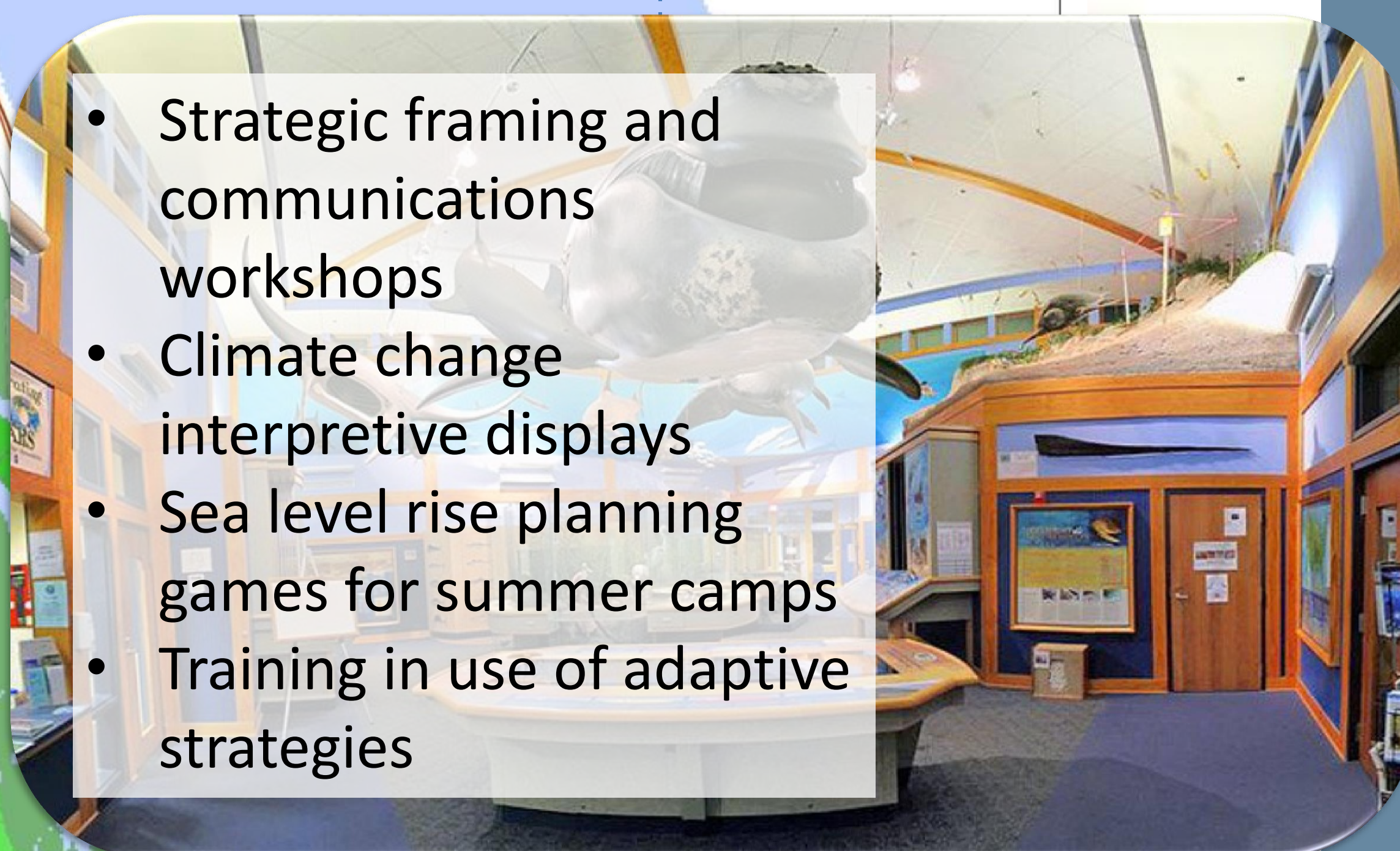
- Matanzas River Watershed
- Major Roads
- Existing Open Water
- Cities and Towns
- Other Conservation Lands

0 0.5 1 2 Miles



### education & outreach

- Strategic framing and communications workshops
- Climate change interpretive displays
- Sea level rise planning games for summer camps
- Training in use of adaptive strategies



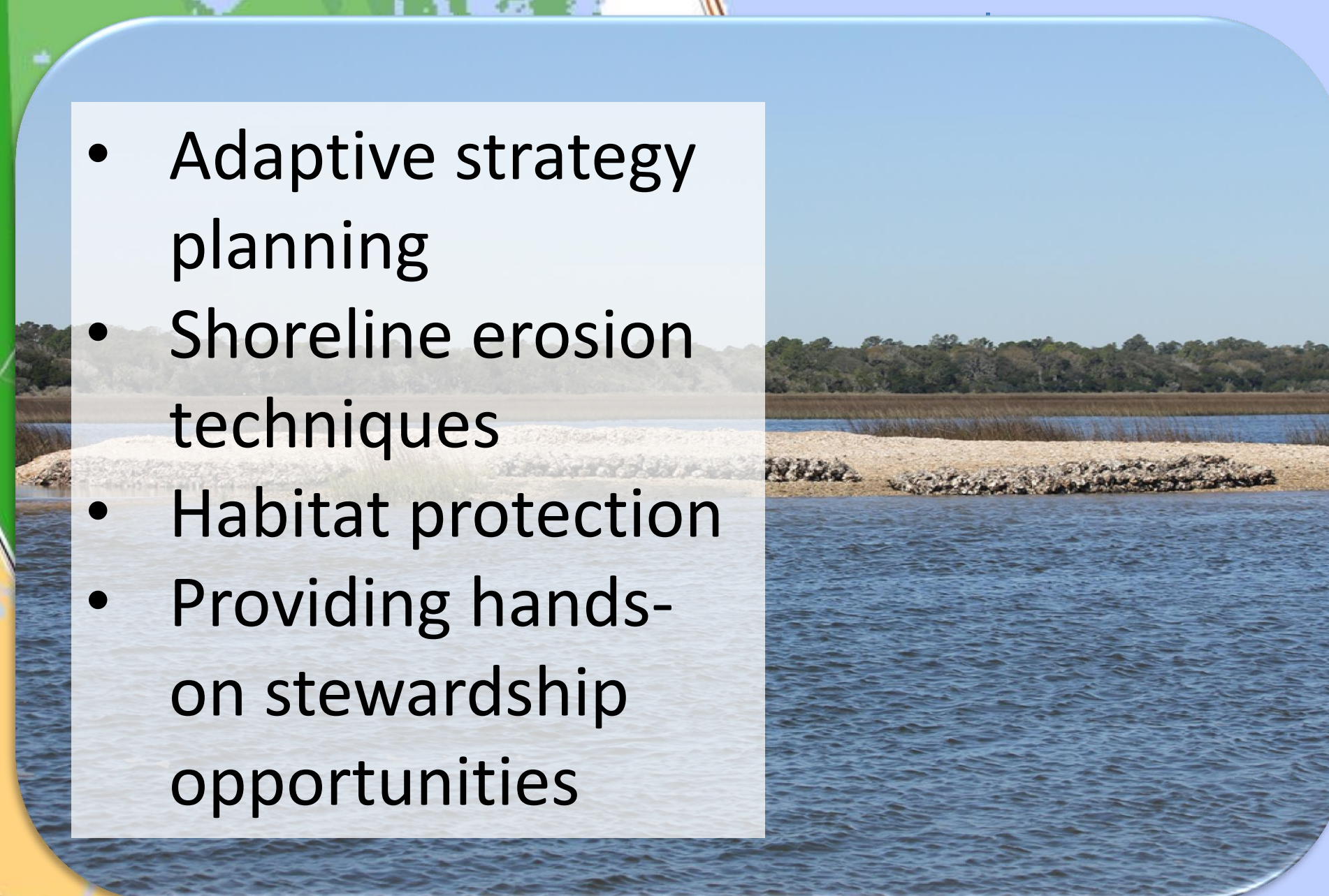
### innovative strategies

- Living shorelines
- Marsh restoration
- Habitat conservation through acquisition and easements
- Water conservation easements



### resource management

- Adaptive strategy planning
- Shoreline erosion techniques
- Habitat protection
- Providing hands-on stewardship opportunities



#### Image citations:

Collaboration photo: University of Florida. (2006). [Photograph]. Retrieved September 6, 2014 from: [http://sfrc.ufl.edu/extension/florida\\_forestry\\_information/forest\\_management/harvesting\\_methods.html](http://sfrc.ufl.edu/extension/florida_forestry_information/forest_management/harvesting_methods.html)  
Education and Outreach photo: Augustine.com (2014). [Photograph]. Retrieved September 6, 2014 from: <http://augustine.com/thing-to-do/guana-tolomato-matanzas-nerr>